

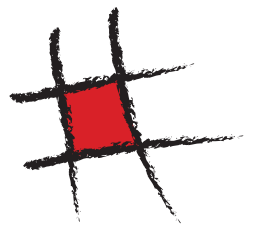
Centra



MADE IN BELGIUM



4m





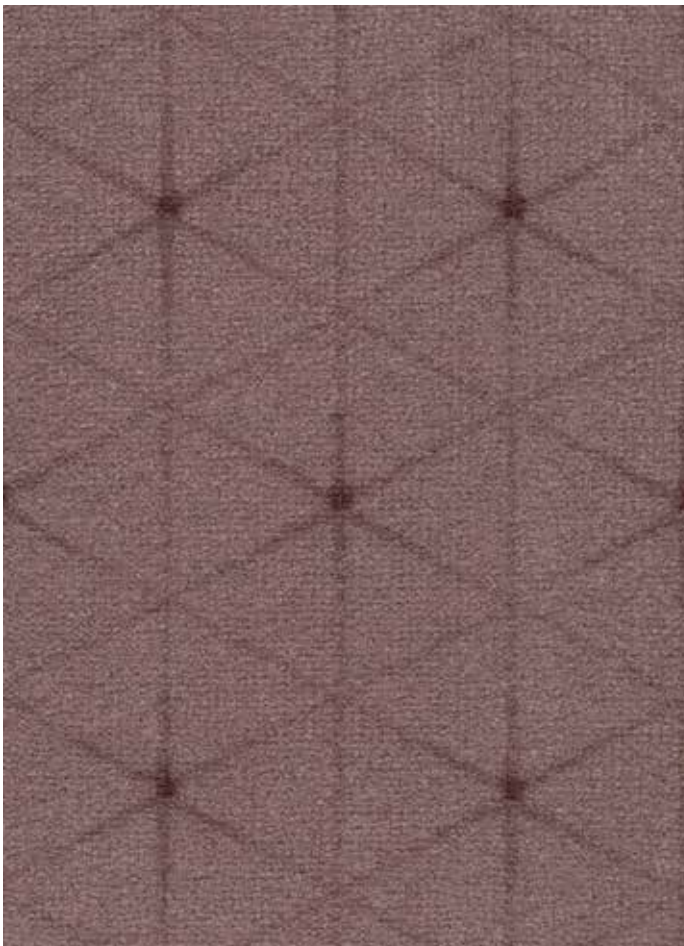
Taupe

40



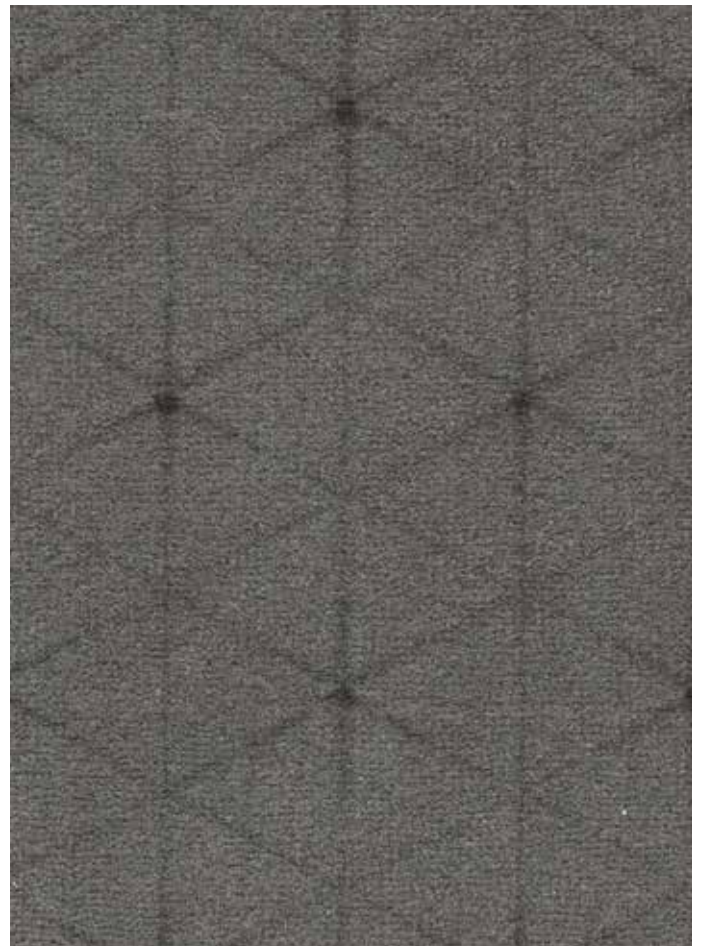
Mocca

45



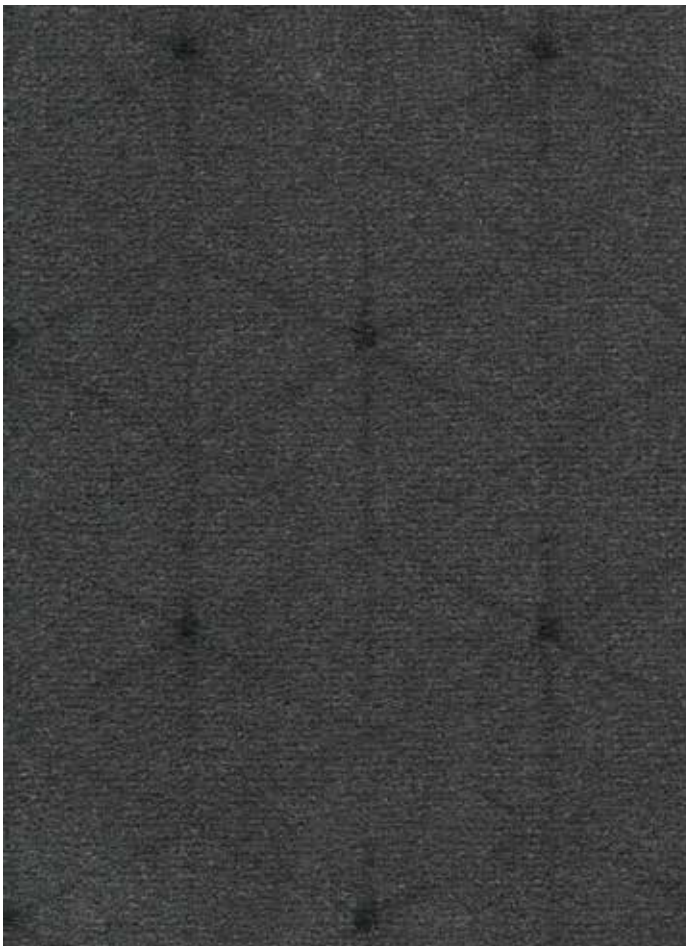
Coral

67



Platina

95



Anthracite

96



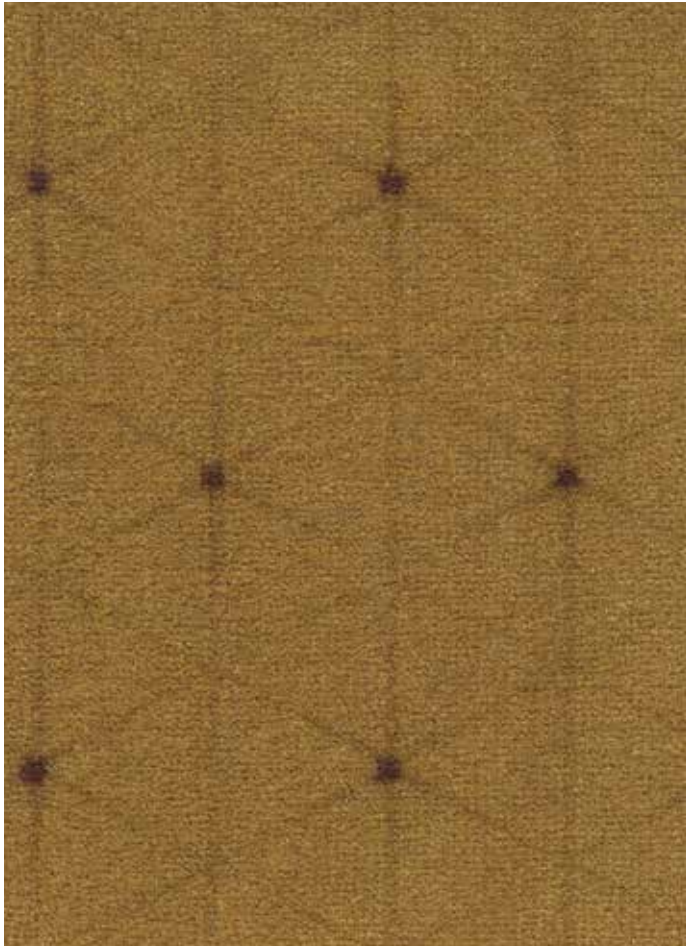
Midnight

78



Forest

24



Midas

54



Cognac

80



Cardinal

12



Centra

Velours	100% PA
Dossier	Feltbac
Poids g/m ²	1.000
Epaisseur totale en mm	8,5
Hauteur du velours en mm	7,5
Jauge	1/10
Densité: points/m ²	205.400
Poids total: g/m ²	1.800
Résistance thermique m ² C°/W	0,13
Isolation Phonique	DL_w = 26 dB
Classement feu	C_{fl} - s1 (17/1781)
	U₃P₃E₁C₀ (04/158-26-00)
Raccord	L/H: 15,5 cm - B/W: 9 cm
DOP	1008#BL0011

DOMAINE D'USAGE

Usage d'habitation : intensive : Séjour, Salle à manger, Circulations, Escaliers, Bureau Privé
 Usage professionnel : normal : Chambre d'hôtel, Boutique, Magasin, Restaurant,
 Salle de Réunion, Circulations, Bureaux, Escaliers

Pile	100% PA
Backing	Feltbac
Pile weight g/m ²	1.000
Total thickness in mm	8,5
Pile height in mm	7,5
Gauge	1/10
Tufts per sqm	205.400
Total weight in g/m ²	1.800
Thermal resistance in m ² C°/W	0,13
Sound absorption	DL_w = 26 dB
Fire Classification	C_{fl} - s1 (17/1781)
	U₃P₃E₁C₀ (04/158-26-00)
Repeat	L/H: 15,5 cm - B/W: 9 cm
DOP	1008#BL0011

PERFORMANCE

Domestic use : heavy : Living room, Dining room, Entrance, Hallway, Stairs, Study
 Contract use : general : Hotelroom, Boutique, Shop, Restaurant, Conference room,
 Office, Stairs

REG.NR
831A2A79
www.pro-dis.info

CARPETS TESTED FOR A BETTER LIVING ENVIRONMENT
GUT TESTED

EN 14041 NB 0493 DOP: 1008#BL0011

CE 17 EN1307

DL Cfl-s1
 PCP
 NA HCHO
 DS

UPEC
 3 3 1 0
 Moquettes soufflées et tissées en lés.
<http://evaluation.cstb.fr>
 04/158-26-00

U₃P₃E₁C₀

SelectraULTRA